

STATE OF FLORIDA
 COUNTY OF MARTIN

I, MARSHA STILLER, CLERK OF THE CIRCUIT COURT OF MARTIN COUNTY, FLORIDA HEREBY CERTIFY THAT THIS PLAT WAS FILED FOR RECORD IN PLAT BOOK 2, PAGE 39 OF MARTIN COUNTY, FLORIDA PUBLIC RECORDS THIS 22 DAY OF August, 1995.
 MARSHA STILLER, CLERK
 CIRCUIT COURT
 MARTIN COUNTY, FLORIDA

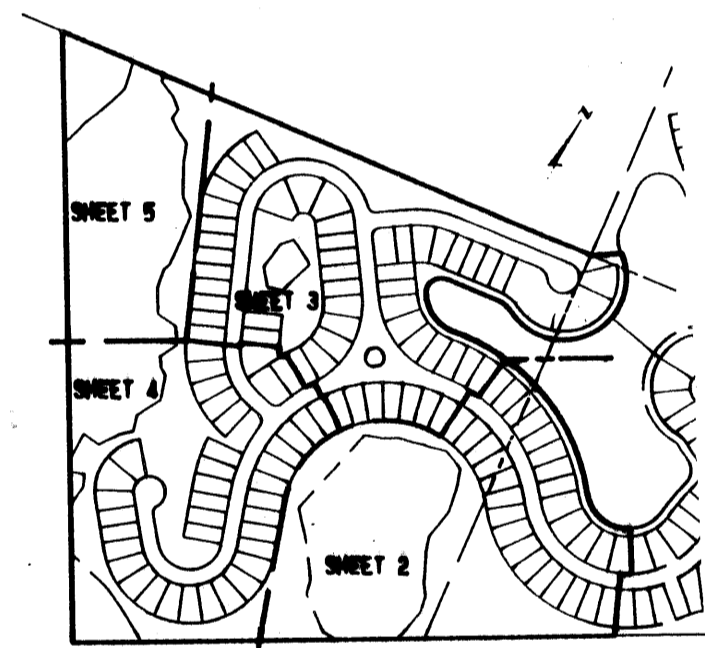
BY: _____
 DEPUTY CLERK

FILE NUMBER: 113-2227

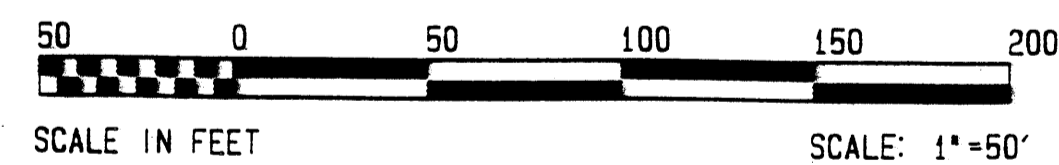
**PLAT III OF
 MARINER VILLAGE, P. U. D. (B)**

IN PART OF SEC. 30, TWP. 38S, RGE. 42E,
 SEC. 0, TWP. 38S, RGE. 41E,
 AND SEC. 0, TWP. 38S, RGE. 42E
 MARTIN COUNTY, FLORIDA

CUNNINGHAM & DURRANCE
 CONSULTING ENGINEERS, INC.
 WEST PALM BEACH, FLORIDA
 APRIL, 1995



KEY MAP



- DENOTES PERMANENT REFERENCE MONUMENT SET
- DENOTES PERMANENT REFERENCE MONUMENT FOUND
- DENOTES PERMANENT CONTROL POINT

